



BRIOVENT®



BRIOVENT™

BRIOVENT®

Turbine driven Ventilator

ADULT | PEDIATRIC | NEONATAL

Designed and Developed  
for the first time in  
INDIA

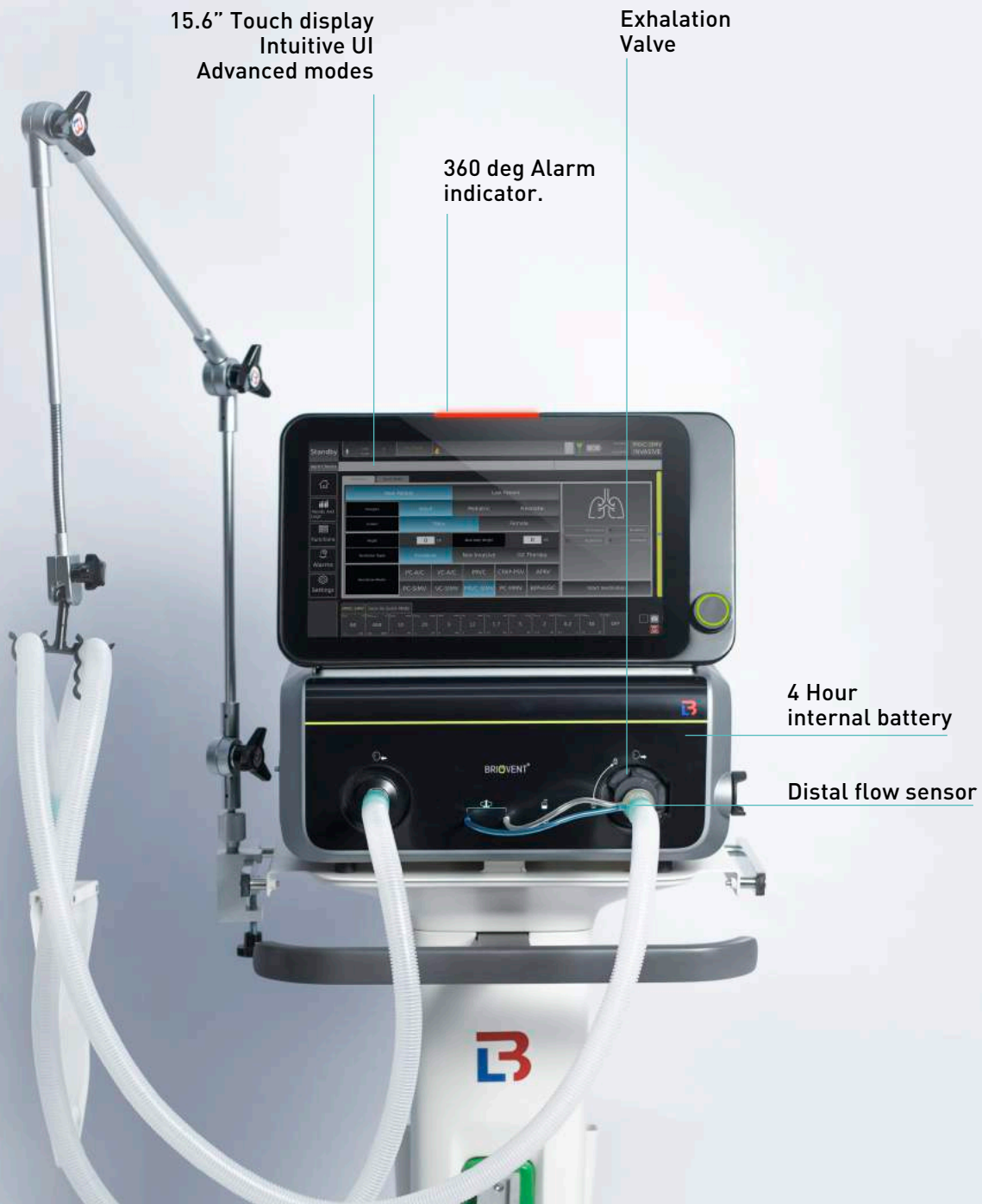


# Most Versatile

One Ventilator for all Adult, Pediatric and Neonatal requirements.

Briovent is capable of all ventilation type

INVASIVE, NON INVASIVE ,O2 THERAPY (HIGH FLOW/OXYGEN THERAPY)





Distal flow sensor for adult and pediatric

# Cutting edge and User-centric

## NEX-GEN TURBINE TECHNOLOGY

Highly responsive generation next turbine provides seamless flow deliveries from Adult to Neonatal patient category.

## USER SELECTABLE FLOW SENSOR

Allow user to select position of flow sensor as Proximal or Distal.

## PERSONALISED PROFILES

Allows the user to create personal workspaces and custom parameters to have a consistent user experience.

## 15.6" TOUCH DISPLAY

Color TFT display to have a seamless visual experience.



Briovent - Neonatal application



# Smart and Intuitive

## ADVANCE MONITORING MODES

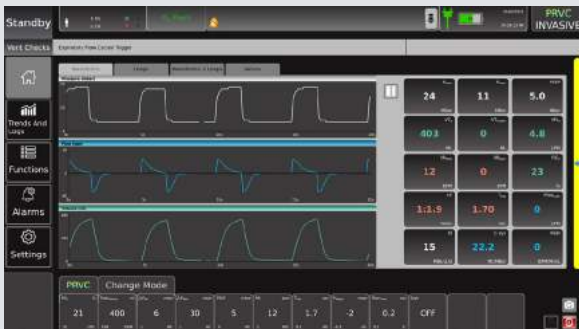
Briovent offers advance modes like PRVC, PRVC SIMV, MMV, APRV, BIPHASIC and breathe by breathe data of lung mechanics.

NIV with automatic leakage compensation modes PC AC, PC SIMV, PRVC, PRVC SIMV, CPAP-PSV, APRV, BIPHASIC

## INTUITIVE USER INTERFACE

Very simple to use touch interface allows easy navigation across settings, patient parameters or waveforms/loops.

Bottom panel gives easy access to setting parameters without going into menu or submenu.



WAVEFORMS



LOOPS



MONITORED VALUES



PATIENT SELECTION

# Reliable and Dependable

## ACTIVE EXHALATION VALVE

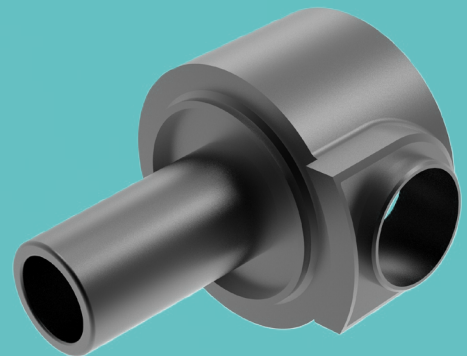
Highly responsive and corrosion resistant metallic autoclavable expiratory valve.

## RECRUITMENT MANEUVER

Lung recruitment tool provides sustained inflation of lungs, aiming to open up the collapsed Alveoli.

## POWER BACK-UP

4 Hour internal battery back-up for emergency power outages and field usages.



# Safe and Comfortable



## 360deg ALARM VIEW

Top mounted alarm indicator with defined priority based color codes gives instant alerts to user viewable from all angles.

## O<sub>2</sub> FLUSH

Increment of FiO<sub>2</sub> for a limited period of time as post suction tool. User can configure settings of FiO<sub>2</sub> & Time.

## DYNAMIC SAFETY VALVE

Electro-pneumatically controlled dynamic safety valve lets an expert doctor control setting of safety pressure limit.

## DYNAMIC SETTINGS LIMIT

Improves patient safety by allowing user to set parameters only within safe limits.

## SIGH

Enhance Comfort of your patient by volume sigh & Pressure sigh.

# Specifications

## PATIENT TYPE

Adult, Paediatric, Neonatal

## TECHNOLOGY

High Performance turbine driven ICU Ventilator

## VENTILATOR MODES

VENTILATOR MODES	INVASIVE ADULT/ PAEDIATRIC	NON-INVASIVE ADULT/ PAEDIATRIC	INVASIVE NEONATAL	NON-INVASIVE NEONATAL
VC A/C (Volume Control Assist Control)	*			
VC SIMV (Volume Control Synchronised Intermittent Mandatory Ventilation)	*			
PC A/C (Pressure Control Assist Control)	*	*	*	*
PC SIMV (Pressure Control Synchronised Intermittent Mandatory Ventilation)	*	*	*	*
PRVC (Pressure Regulated Volume Control)	*	*	*	*
PRVC SIMV (Pressure Regulated Volume Control, Synchronised Intermittent Mandatory Ventilation)	*	*	*	*
APRV (Airway Pressure Release Ventilation)	*	*	*	*
BIPHASIC (Biphasic Positive Pressure Ventilation)	*	*	*	*
PC-MMV (Pressure Control Mandatory Minute Ventilation)	*		*	
CPAP-PSV (Continuous Positive Airway Pressure with Pressure Support and Apnea Backup)	*	*	*	*
NCPAP (Neonatal Continuous Positive Airway Pressure)				*
NCPAP-NIPPV (NCPCP+ Noninvasive positive pressure ventilation)				*
O2 Therapy (High Flow Nasal Oxygen Therapy)		*		*

## MONITORING PARAMETERS

Ppeak	VTe	MVe	Flow peak Insp.	RSBI	Cstat	I:E
Pplat	VTe spon	MVe spon	Flow peak Exp.	PEEP int.	RR Total	SpO2 (Optional)
Pmean	VTi	MVi	Flow leak	PTP	RR Spon	PR (Optional)
PEEP	VTi spon	MVi spon	RC Insp	Ri	T Insp.	EtCO2 (Optional)



# Specifications

## SETTING PARAMETERS

PARAMETER	RANGE
FiO2 (%)	21-100
Tidal Volume (ml)	100-2000 – Adult 50-1000 – Ped. 02-100 – Neo(PRVC)
$\Delta P$ Insp. (mbar)	1-90
PEEP (mbar)	0-40
$\Delta P$ Support (mbar)	0-90
RR (BPM)	1-100 – Adult/Ped. 1-240 – Neonatal
T <sub>insp.</sub> (Sec)	0.2-30
I:E	1:4 – 4:1 (Regulated)
I:E (APRV/BIPHASIC)	1:150-150:1
Rise Time (Sec)	0.1 – (Set T <sub>insp.</sub> )
Exp. Cycle (%)	10-85
Pressure Trigger (mbar)	0.1-20
Flow Trigger (LPM)	0.1 – 15
T <sub>pause</sub> (%)	Off, 10-60%
MV (LPM)* MMV Mode	0-40 Adult 0-20 Ped. 0-10 Neo
P <sub>High</sub> (mbar)	1-90
P <sub>Low</sub> (mbar)	0-40
T <sub>High</sub> (Sec)	0.2-30
T <sub>Low</sub> (Sec)	0.2-30

## WAVEFORM AND LOOP

Pressure Time Waveform  
Pressure-Volume Loop

Volume Time Waveform  
Flow-Volume Loop

Flow Time Waveform  
Flow-Pressure Loop

## APNEA BACKUP MODE

PC A/C OR VC A/C

## USER SETTABLE ALARM

High Ppeak	High MVe	High VTi	High RR	High FiO2	Apnea
Low Ppeak	Low MVe	Low VTi	Low RR	Low FiO2	



# Specifications

## SIGH

Volume sigh and pressure sigh.  
Breathe Count: OFF, 50-250 BPM  
 $\Delta P$  Sigh: 1-20 mbar (above PEEP, max 90 mbar)  
 $\Delta VT$  Sigh: 1-2000 ml (Above Set VT, Max. 2000 ml)

## TUBE COMPENSATION

Tube Type: Endo Tracheal Tube,  
Tracheotomy Tube  
Tube ID: Adult 5-12 mm, Paediatric 2-8 mm,  
Neonatal 2-8 mm  
Compensation % : 1-100%  
Inspiratory/Expiratory Compensation On/Off

## NEBULIZER

Nebulizer Time: 0-60 sec.  
Nebulizer Flow: 3-10 LPM  
Nebulizer Position: Before/After Flow Sensor

## O2 FLUSH

Time O2 Flush: 1-5 min. Configurable  
FiO2 O2 Flush: 21-100% Configurable

## PHYSICALS SPECIFICATIONS

	Dimension (LxBxH)	Weight kg
BrioVent:	440 x 380 x 460 mm	16.70
With Trolley:	570 x 520 x 1430 mm	39 Kg.

## DISPLAY

15.6 Inch TFT Touch Display with Encoder  
Display Resolution: 1920x1080 pixels  
with Adjustable brightness

## POWER SUPPLY AND BATTERY

Input Voltage: 110-240 VAC 50/60 Hz  
Battery: Lithium-Ion pack 10A, 24VDC  
Backup Time: 4 hours in Normal working Condition

## INTERFACE

USB, VGA, RJ45

## GAS SUPPLY

Air: Built in Turbine 200 LPM Regulated  
Oxygen: Medical Grade Oxygen 40-60 PSI  
O2 Connection: DISS

## MANOEUVRE

Inspiratory Hold,  
Expiratory Hold,  
P0.1, Intrinsic PEEP,  
Lung Recruitment (Optional)

## GAS STANDARD

ATPD/STPD/BTPS

## OXYGEN INPUT PURITY

90 to 100%

## TREND AND LOGS

96 hours Trend &  
1000 events history

## O2 THERAPY

FiO2 : 21-100%  
Flow : 1-65 LPM



Designed, manufactured and Marketed by

**LIFELINE BIZ PVT. LTD.**

Plot 9/10, Mahagujarat Industrial Estate, Bh Gaay Chap Besan,  
Moraiya, Ahmedabad 382213 India  
phone: +91-8980007843  
email: info@lifelinebiz.com



[www.lifelinebiz.com](http://www.lifelinebiz.com)