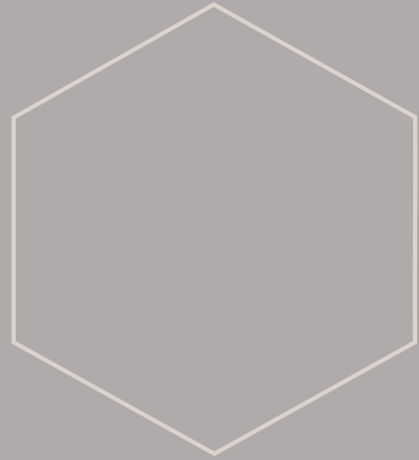


FRANCHISE



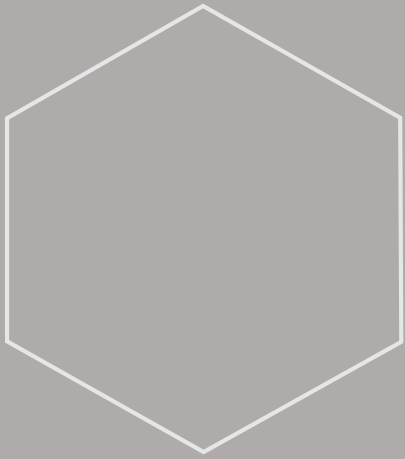
THAW BUILDERS



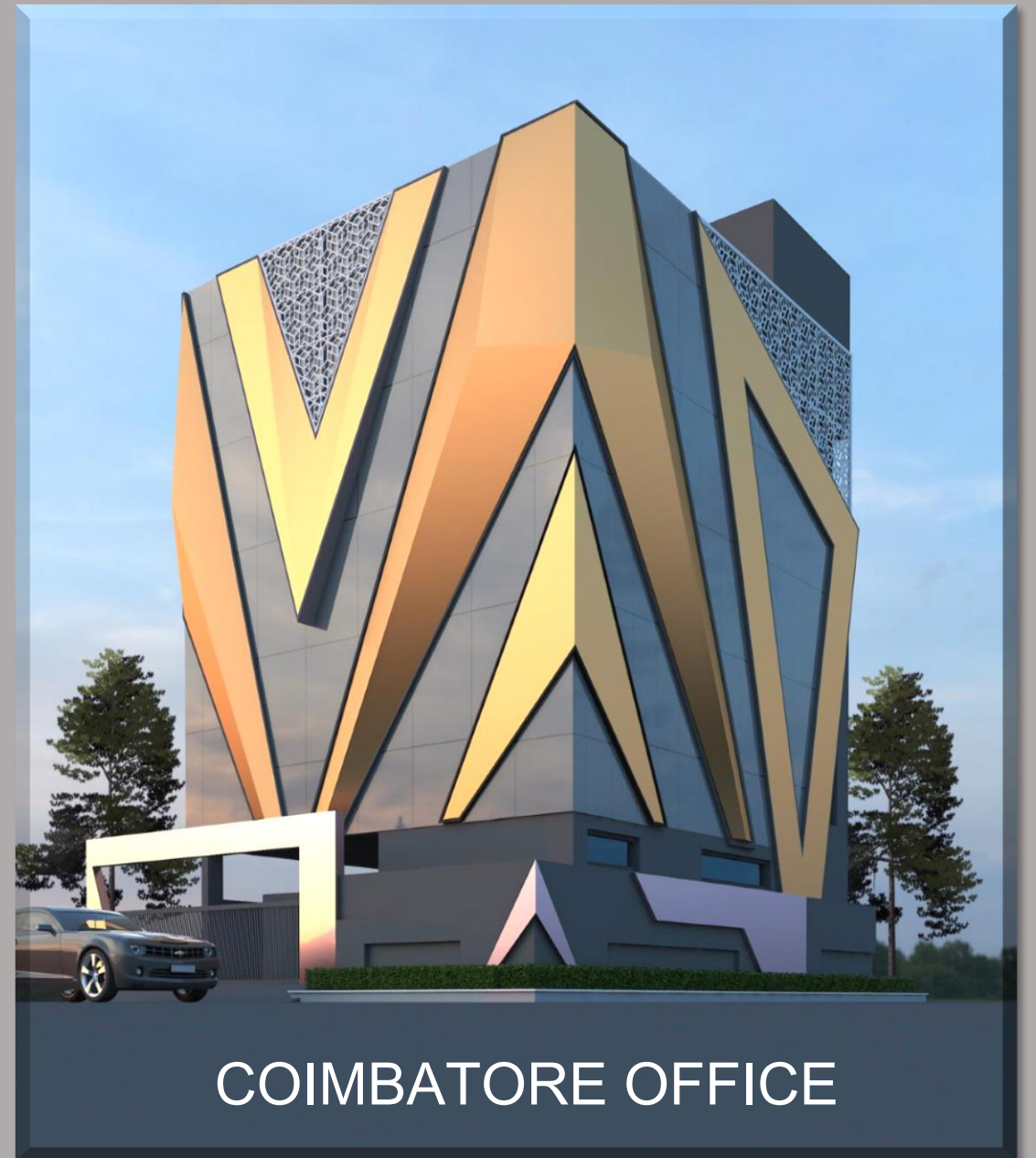


AGENDA





HEAD OFFICE



WHY FRANCHISE?



With over a decade of experience and a dedicated team, thaw has committed to realizing its vision of fostering opportunities for young entrepreneurs nationwide.



For ambitious civil engineers seeking to remain at the forefront of their field and align with contemporary trends, leveraging the profile of thaw developers and builders presents a valuable opportunity. By associating with us, individuals gain access to valuable resources and opportunities that can accelerate their professional growth.



Together, we share a collective vision of contributing to India's progress and shaping a better future. Let us unite our efforts and expertise to construct a modern India characterized by quality and innovation.

WHY WE?



QUALITY

Amidst the crowd, we uphold our commitment to professional ethics and quality.



CONTROL

Every small project is meticulously handled, accompanied by thorough documentation and established processes.



PROFICIENCY

Timely completion through pert charts and provide professional customer support.



DESIGNS

High-standard drawings for all projects, regardless of size.



PROFIT

Assured profit of 20% in the project cost



**Construction
turnkey**

**Project
Management
Consultancy**

**Architectural
&
Structural
Consultancy**

Development

**Interior Designing
& Turnkey**

**Animation-
3D views
Walkthrough**



**SERVICES
PROVIDED**

COMPANY SUPPORT



DRAWINGS AND DOCUMENTS

- Architectural Drawings
- Structural Drawings
- MEP Drawings
- 3D Views, Walk-Throughs
- Bill Of Quantities



CHARGES

- Documentation process will be provided at nominal charges.
- Marketing through SEO and Social Media will be charged at a nominal Rs.10,000/- per month.
- Project up scaling to a larger profile will be facilitated by our Chief Architect at a minimal expense.

MARKETING SUPPORT



ELIGIBILITY

People who desire to
become a successful
Entrepreneur

People who have the
ability to invest their
extra time in the venture

People who are
innovative and
customer friendly

People who have strong
Business acumen and
managerial skills

People from diverse
fields seeking success
in the construction
industry

FRANCHISE DETAILS



- Thaw - Year of Establishment - 2002
- Franchise - Year of Establishment - 2023
- Business details - Builders & Developers



- Office space required - 200 to 500 sq.Ft
- Royalty amount - 10 lakhs
- Profit share - 80% of the Project profit for Franchisee
- ROI - One year minimum [Principal Amount]



- Partnership type - Area / Associate partner
- Tenure renewal - 5 years



ABOUT US

THAW was born in the year 2002...

Thaw Designers is a Multidisciplinary Architectural firm which houses services like Architectural Design Consultancy, Interior Design Consultancy and Contract works, Project Management Consultancy, Layout Planning and Renovation of Interior, Architectural and Constructional Projects with a self motivated, enthusiastic team that aspires to make a mark on the globe – nationally, and inter-nationally.

Thaw Designers Architectural Practice started in the year 2002 by a team of Architects In Bangalore and also has branched out to Coimbatore.

Unique in our own ways continued the tradition of defining and creating dimensions for Clients dreams with passion and dedication towards achieving the complete Solution with innovation, classification, technology and excellence.



OUR COMPANY

THAW DEVELOPERS & BUILDERS INDIA PVT LTD., Coimbatore was incorporated in the year 2009 by Architect Prasath Chandrasekaran & Architect Tara Prasath.

The core company of **THAW DESIGNERS** Coimbatore has traversed a path of steady growth & expansion and has posted increasing turnover and profits year after year. The systems have been strengthened and new processes have been added. Construction and Project Management Consultancy for the external client was the key factor led to form the development firm .

The company is managed by highly qualified professionals who are fully engrossed to ensure that the company maintains its high standards in quality construction, timely delivery and customer satisfaction. The company has always strived hard to keep its commitments and thus enjoys an extremely resonant reputation in the construction industry.



Ar. Prasath Chandrasekaran
[Director]

Prasath Chandrasekaran is a self-made entrepreneur with a remarkable trajectory, commencing his career with humble beginnings of less than Rs. 10,000. Today, he stands as a testament to entrepreneurial success, spearheading projects exceeding 10 crores in value.

In 2002, he laid the foundation of his journey with THAW DESIGNERS, operating from a modest 200 sq.ft office space near Lalbagh West Gate, Bangalore. Over the years, Prasath Chandrasekaran's visionary leadership has propelled the expansion of his enterprise. In 2008, he ventured into Coimbatore, establishing himself as a Project Management Consultant for the prestigious AKASH HOMES project.

Under his guidance, the construction unit has delivered approximately 2 million sq.ft. of diverse projects, ranging from residential and commercial properties to farmhouses, plotted developments, and hotels. Beyond his entrepreneurial endeavors, Prasath Chandrasekaran is a distinguished member of the Council of Architecture, Delhi. His multifaceted expertise and unwavering commitment to excellence continue to inspire and drive success in the industry.



Ar. Tara Prasath
[Director]

Tara Prasath is a dynamic entrepreneur who embarked on her journey with a strong foundation in architecture, honed through extensive experience under leading architects in Bangalore. Joining THAW DESIGNERS as a partner in 2005, she has since demonstrated her prowess by spearheading approximately 600 projects across South India, each characterized by a commitment to innovative design.

With a keen eye for creativity and an unwavering dedication to professionalism, Tara oversees operations from her 2000 sq.ft office in Coimbatore, dedicated to nurturing the creative process. Her membership in the Council of Architecture, Delhi, underscores her expertise and commitment to industry standards.

In addition to her architectural pursuits, Tara is a Partner at Tasya, a firm dedicated to women's empowerment across various sectors. She also serves as a director of Chandran's Yuva Foundation, further exemplifying her dedication to societal betterment and community engagement.

A decorative graphic on the left side of the slide. It features a large orange hexagon at the top left, a smaller light blue hexagon at the bottom left, and a central hexagon containing a detailed architectural floor plan. A thin white hexagonal outline is also visible to the left of the blue hexagon.

OUR VISION

Our aim is to provide premium housing and commercials to our clients at par with international standards so as to provide benchmark quality standards and a luxurious lifestyle.

However, care must be taken to keep a price line within the affordability range of the Indian Market so that people are able to afford an International Lifestyle at a reasonable price.

In the Future, we want our company to be a major infrastructure and growth driver for the development of India so that the whole nation gets empowered

THANK YOU

SF No. 128/2, Chandra Garden,

Triveni West Road, Kalapatti, Coimbatore, Tamil

Nadu - 641035.

Ph.No - +91 9786300084 / 9384998646

thawbuilders@gmail.com

www.thawbuilders.com

